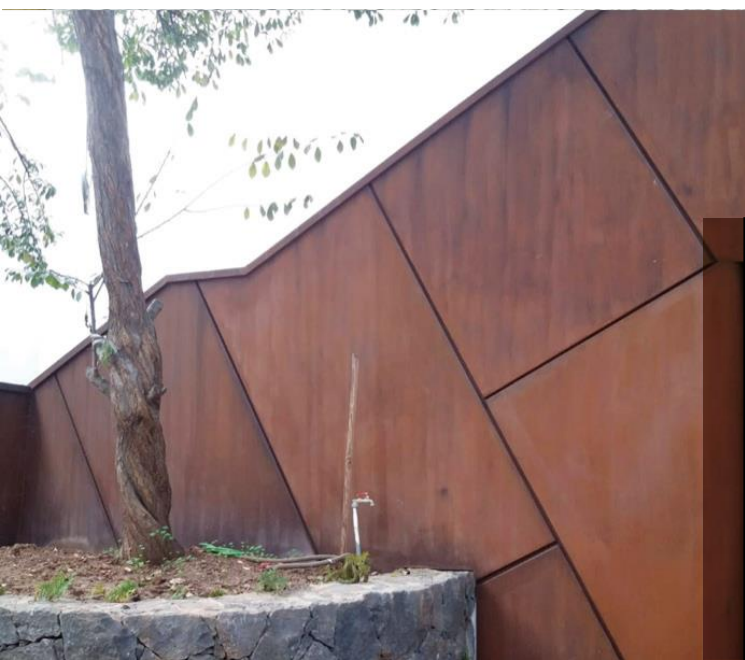


# METALCORTEN®

MANUFACTURE AND DISTRIBUTION OF CORTEN STEEL MULTI-PRODUCT  
GLOBAL SPECIALISTS IN WEATHER RESISTANT STEELS  
CORTEN STEEL MANUFACTURING - FABRICATION DE L'ACIER CORTEN



## CHARACTERISTICS

- ✓ Corrosion rate much slower than normal steel
- ✓ Protects the base steel and does not lose any mechanical properties
- ✓ Weather resistant steel
- ✓ Chemical composition:  
(copper) - (nickel) - (chromium) - (phosphorus)
- ✓ Available **COR-TEN®** (original registered trademark)

### DISTRIBUTORS WAREHOUSES:

We have more than 30 distributor warehouses in **SPAIN**.

### EUROPEAN WAREHOUSES/DISTRIBUTORS:

FRANCE, PORTUGAL, BELGIUM, NETHERLANDS, ITALY, SLOVAKIA, GREECE, RUMANIA, SWEDEN, CROACIA, AUSTRIA, CZECH REPUBLIC, SWEDEN, POLAND, LETONIA, LITUANIA

### INTERNATIONAL WAREHOUSES/DISTRIBUTORS:

DOMINICAN REPUBLIC, EL SALVADOR, MEXICO, BRASIL, CANADA, MOROCCO, SAUDI ARABIA, UNITED KINGDOM, EMIRATES

## CORTEN SHEET IN FORMAT

METALCORTEN sheets are manufactured in our best steel mills in Bilbao en Europe from recycled scrap and manufactured according to the specifications and chemical composition determined by our R&D team.

We can offer original patented COR-TEN® grades, as well as S355J2WP, HC 315WP INDATEN and other grades upon request.

Continuous stock of sheet and coil in any thickness. Furthermore, with custom cutting lines and plasma cutting equipment, we can meet any requirement our customers may have.



### CHECK CUSTOM MANUFACTURING

Length (mm)	Width (mm)	Thickness (mm)	Finish
2000	1000	1.5/2	COLD-ROLLING-HC315WP-A-M-O
3000	1500	1.5	COLD-ROLLING-HC315WP-A-M-O
2500	1250	2/3	COLD-ROLLING-HC315WP-A-M-O
3000	1500	2/3	COLD-ROLLING-HC315WP-A-M-O
2000	1000	2/3/4/5/6	BLACKS355J2WP-S355J0WP
3000	1500	2/3/4/5/6/8/10/15/20	BLACKS355J2WP-S355J0WP
6000	1500	8/10/15/20	BLACKS355J2WP
6000	2000	15/20/25/30/40/50	BLACKS355J2W+N

## CORTEN TEAR PLATE



**NOVELTY.** For works with anti-slip sheets for exteriors, manufactured in coil width 1335 thickness 3/5 giving a step forward in integral and ecological solutions in corten steel. Perfect for steps, stairs, facades with accentuated finish, anti-slip and multifunctional walkways.

QUALITY S355J2WP ----STOCK IN REEL 1335X3,5/5,5

STOCK IN FORMAT: 2000X1335 AND 3000X1335 ON 3,5/5,5

### CHECK CUSTOM MANUFACTURING

## CORTEN STEEL COIL

We have coils in stock and a continuous program for flattening according to our customer's needs.

The qualities are the same as the sheet in format.



QUALITY: INDATEN HC315WP  
MEASURES (mm)

1000x1,5 (INDATEN HC315WP)

1500x1,5 (INDATEN HC315WP)

1000x2,0 (INDATEN HC315WP)

1250x2,0 (INDATEN HC315WP)

1500x2,0/3 (INDATEN HC315WP)

QUALITY: BLACK S355J2WP  
MEASURES (mm)

1000x2,0/ 2.5/ 3 (BLACK S355J2WP)

1500x2,0/2.5/3 (BLACK S355J2WP)

1500x4,0/5/6 (BLACK S355J2WP)

1500x8,0/10/15/20 (BLACK S355J2WP)

2000x10/15/20/25 (BLACK S355J2WP)

# CORTEN TUBE



In 2016, we began with the tube manufacturing.

It has the same composition as Corten sheet metal, thus avoiding contamination of steel that does not comply with the standard of the sheet we use to construct the same structures. Quality S355J2WP and HC315WP, also COR-TEN® original.

We currently have monthly programs in stock for all 2 mm and 3 mm dimensions (TUBE THICKNESSES ARE THICKNESSES WITH TOLERANCES of up to -0 +0.2, we always guarantee the NOMINAL thickness or more).

We have a wide range of Corten steel tubing (6,000 mm long) in permanent stock. QUALITY: S-355-J2WP.

**CHECK CUSTOM MANUFACTURING**

Square tube	Rectangular tube	Round tube
20x20x2*	40x20x2*	Ø 20x2*
30x30x2*	50x30x2*	Ø 30x2*
40x40x2* / 3*	60x30x3*	Ø 40x2*
50x50x2* / 3*	60x40x2*	Ø 50x2*
60x60x2* / 3*	60x40x3*	Ø 60,3x3*
80x80x2* / 3*	80x40x2*	Ø 89,3x3*
100x100x3*	80x40x3*	Ø 100x3*
120x120x3*	100x50x2*	Ø 168x3*
150x150x3*	120x60x3*	Ø 50x5* C
200x200x4	140x80x3	
	150x100x3	

# ROUND SMOOTH CORTEN STEEL

(S355J2W+AR)

For railings, sculptures, and different structures.  
Usually used combined with corten flat bars for different works.

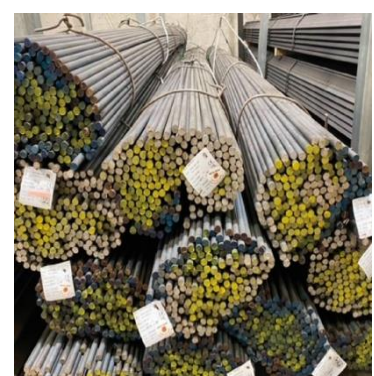
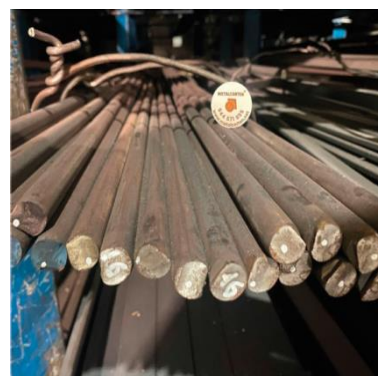
Quality: S355J2W+AR MEASURES (mm)

Round smooth of 10 at 6000 mm.

Round smooth of 12 at 6000 mm.

Round smooth of 16 at 6000 mm.

Round smooth of 20 at 6000 mm.



**CHECK CUSTOM MANUFACTURING**

## CORTEN STEEL STRIP BARS

Hot-rolled Corten steel strip is the solution for our customers requiring specific, limited-production sizes in length S355J2W + M/+AR, with a length of 6,100 mm.

Custom cutting from sheet is also available.

Cutting is based on stock 3000×1500 mm and 6000×1500 mm sheets. We offer strips in various sizes with rotation capabilities, allowing us to create custom dimensions using our high-definition plasma.



LAMINATED FLAT SHEET - Quality: S355J2W + M Measures in - STOCK:

30X6 à 6000mm S355J2W+M

40x8 a 6.000 mm S355J2W + M

50x8 à 6.000 mm S355J2W + M

50x10 à 6000mm S355J2W+M

100x8 à 6.000 mm S355J2W + M

100x10 à 6000mm S355J2W+M

150x8 à 6.000 mm S355J2W + M

150x10 à 6000mm S355J2W+M

200x8 a 6.000 mm S355J2W + M

200x10 a 6.000 mm S355J2W + M

[CHECK CUSTOM MANUFACTURING](#)

## ANGLES (PROFILES S355J2W+M/+AR)



Commercially available angles in stock for conventional civil and industrial structures as a response to the different types of shapes that complete the range of constructive and durable Corten steel.

MEASURES IN STOCK

30X30X3 a 6,1 m.

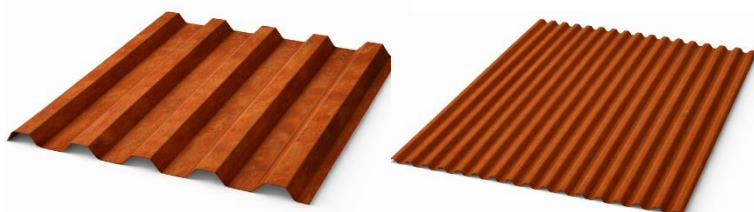
40x40x4 a 6,1 m.

50x50x5 a 6,1 m.

60x60x6 a 6,1 m.

[CHECK CUSTOM MANUFACTURING](#)

## CORTEN STEEL ROOFING SHEET



NEW

We manufacture and stock the following roofing sheets:

- TRAPEZOIDAL PA30T

- MINIONDA PA-18M

Thickness 0.8 mm and length 6000 mm.

[CHECK CUSTOM MANUFACTURING](#)

# CORTEN PERFORATED PLATE



NEW

Perforated sheet with square hole to create your corten steel fences.

QUALITY HC315WP COLD ROLLED

SIZE: 2000X1000X1.5 MM

SQUARE HOLE:

T20 C20

T30 C30

T40 C40

CHECK CUSTOM MANUFACTURING

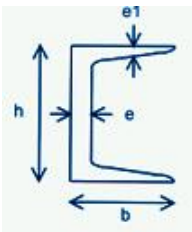
# CORTEN STEEL BEAMS

NEW

CHECK CUSTOM MANUFACTURING

FOR ANY TYPE OF STRUCTURE

QUALITY S355J2W+AR



In 6- and 12-meters lengths, in 3 sizes of U:

UPN 80

UPN 100

UPN 120



# CORTEN ELECTRODES



The special electrode for corten is a moisture-resistant, LMA-coated electrode, alloyed with Ni and Cu, which provides a metal with good resistance to corrosion by seawater and flue gas. It is suitable for welding weather resistant steels (COR-TEN) and for shipbuilding. This electrode can be used for all types of joints and welding positions.

## RUST ACTIVATOR METALCORTEN



### CHARACTERISTICS:

An oxidizing solution of water-soluble mineral salts accelerates the rusting process on ferrous surfaces such as corten steel.

### SURFACE PREPARATION:

The surface must be free of scale. Hot-rolled irons, and cast iron must be pickled to remove any scale present on the surface.

If the surface is greasy, it must be degreased.

### APPLICATION:

Leave for 1 hour and repeat application. Although oxidation is instantaneous, it is recommended to leave the product on for at least 3 days.

## PROTECTOR METALCORTEN



Effect sealer is a transparent sealer, which protects metals and surfaces from high acidity, prevents further oxidation and prevents color yellowing. It chemically protects and minimizes further oxidation, creating a self-crosslinking barrier to resist weathering.

Does not require dilution with water, it is applied directly on metals. When applied over Effect's iron, copper or bronze paints, dilute in equal parts with mineral water for the 1st coat only. It does not require the subsequent application of any finishing varnish.

Note: Effect Sealer is sensitive to humidity during the drying process.



**BEFORE APPLICATION**

**RUST ACTIVATOR**

**ACTIVATOR + PROTECTOR**

**METALCORTEN STEEL S.L**

Grupo Hierros Etxebarria S.L.

[www.metalcorten.net](http://www.metalcorten.net) • [www.vente-aciercorten.fr](http://www.vente-aciercorten.fr) • [www.metalcorten.uk](http://www.metalcorten.uk)

Poligono Bekea , Naves nº4,5,6,8,10y11-

48960 GALDAKAO (BIZKAIA):

SPAIN: [info@metalcorten.net](mailto:info@metalcorten.net) (+34)944571855-  
(+34)639208034

FRANCE: [france@metalcorten.net](mailto:france@metalcorten.net)-(+34)639208962

ENGLISH: [info@metalcorten.net](mailto:info@metalcorten.net)-(+34)606259298